

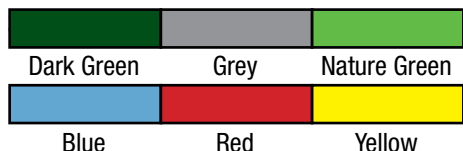
- Tip-up/skip bins
- Bin Tippers
- Dumpmaster
- Rubbish bins

REFUSE & MAINTENANCE



Backsafe Australia supplies a comprehensive range of waste handling products. Our mobile garbage bins are available in six colours. They are moulded in specially developed low-pressure polyethylene which is resistant to rot, frost, heat, chemicals and UV light.

Specify colour when ordering



Please specify the colour of the bin and lid when ordering

Mobile Waste Bins

| Model | Capacity | Height | Width | Depth |
|--------|----------|--------|-------|-------|
| MGB80 | 80L | 929mm | 445mm | 503mm |
| MGB120 | 120L | 930mm | 500mm | 540mm |
| MGB140 | 140L | 1065mm | 500mm | 540mm |
| MGB240 | 240L | 1075mm | 580mm | 715mm |



MGB80

MGB240

MGB120

Bin Accessories



Rubbish lid to suit 120 or 240 litre MGB available with hinged flap.

Model E926A – hood lid with hinged flap to suit 120 Litre bin

Model E659A – hood lid with hinged flap to suit 240 Litre bin

Large Capacity MGB

For commercial and industrial applications. MGB660 available with optional foot operated lid opener.

| Model | Capacity | Width | Depth | Height |
|---------|----------|--------|--------|--------|
| MGB660 | 660L | 1360mm | 765mm | 1235mm |
| MGB1000 | 1000L | 1360mm | 1105mm | 1350mm |
| MGB1100 | 1100L | 1360mm | 1070mm | 1465mm |



MGB660



MGB1100



Foot Operated Lid Lifter

Ideal for... food manufacture, hospitals and healthcare, city councils, retail outlets and shopping centres.

- Simple foot bar operation, stainless steel construction
- Permanently attaches to wheelie bin
- High quality construction and design

| Model | Description |
|--------|----------------------------------|
| LF-80 | Lid Lifter to suit 80 litre MGB |
| LF-120 | Lid Lifter to suit 120 litre MGB |
| LF-240 | Lid Lifter to suit 240 litre MGB |

Units supplied complete with bins.
Specify colour

Model LF-80



Nipper Reacher

Provides extra reach for disposal of littered items. Safe and hygienic method of picking up litter.

1000mm Long

Model S-W02100.



Stainless Steel Lid Lifter

Perfect for hospitals, surgeries, commercial kitchens, or areas where hygiene is critical.

- Heavy duty stainless steel lid lifter
- Clinical waste bin supplied with base unit provides hygienic hands-free bin.
- Tight fitting, overlapping lid with locking handle
- Available in Yellow and Green

| Model | Dimensions | Capacity | Opened Height |
|---------|-----------------|-----------|---------------|
| LF35/SS | 335mmØ x 525mmH | 35 Litres | 880mm |
| LF50/SS | 335mmØ x 730mmH | 50 Litres | 1090mm |



Type NWB-T

Suitable for emptying 240 litre plastic bins. The bin is wheeled into the attachment and secured by the safety chains. The tipping is simple and safe, the forklift operator does not leave his seat. Available for one or two plastic bins.

- 180 degree rotation
- Load Centre 1100mm
- Pocket Size 160 x 60mm
- Pocket Centres 340mm
- Enamel Paint Finish

| Model | NWB-T1 | NWB-T2 |
|-------------|--------|--------|
| SWL (kg) | 500 | 1000 |
| Weight (kg) | 100 | 150 |
| No. of Bins | 1 | 2 |



Model NWB-T1

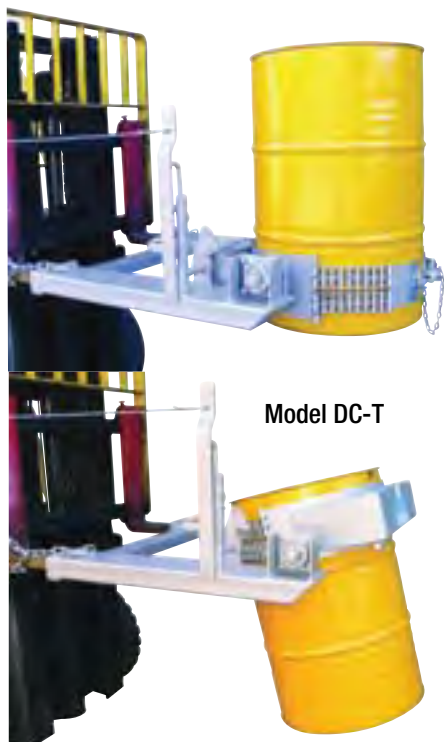


Model NWB-T2

Type DC-T

The fast economical solution to emptying 205 litre drums. To release the drum the operator pulls the draw cord from the driver's seat. This unit is ideal for scrap and waste products.

- 500kg safe working load
- 180 degree rotation
- Unit weight 100kg
- Load centre 1000mm
- Pocket size 160 x 65mm
- Pocket centres 800mm
- Enamel paint finish



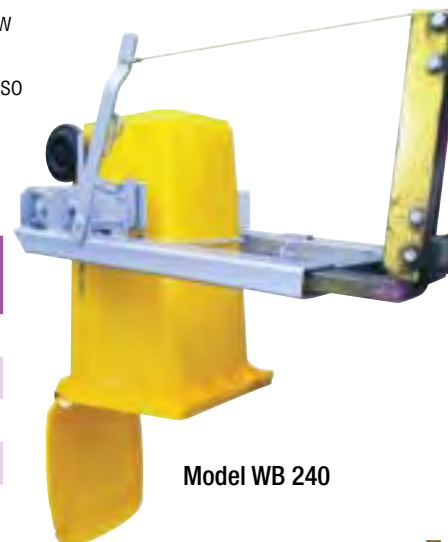
Model DC-T

Type WB

Simple operation, the operator pulls the draw cord to tip the bin. Manufactured to suit a range of bins from 80 litres to 660 litres. Also available with hydraulic option for controlled 130 degree rotation. SWL 500kg.

- Pocket size 160 x 60mm

| Model | Capacity (kg) | Pocket Centres |
|----------|---------------|----------------|
| WB80 | 90 | 670mm |
| WB120 | 95 | 710mm |
| WB240 | 100 | 800mm |
| WB240HYD | 105 | 800mm |
| WB660 | 140 | 500mm |



Model WB 240



Model WB 240 HYD
Hydraulic operation



Type TU Tipper Bins

Heavy duty – Type TU bins are manufactured from 3mm plate with galvanized finish as standard. A low profile design allows for versatility in confined areas. The pouring lip and smooth edges make this bin ideal for food industry applications. The release mechanism is activated by the forklift operator pulling the draw rope from the drivers seat. The custom built shock/absorber prevents impact forces being transmitted to the forklift during emptying. Galvanised finish.



Options include:

- Drain cock and strainer – add suffix DC to model
- Cast Iron or rubber wheels – add suffix W to model
- Crane lugs – add suffix CL to model

Specifications:

- Capacity : 1000kg SWL
- Pocket size : 160 x 65mm
- Pocket centres : TU 6 – 405mm
TU 9 – TU20 – 635mm

| Model | Capacity m3 | Weight kg | Width mm |
|-------|----------------|--------------|-------------|
| TU 6 | 0.50 | 185 | 700 |
| TU 9 | 0.75 | 200 | 1000 |
| TU 12 | 1.00 | 215 | 1300 |
| TU 15 | 1.25 | 240 | 1600 |
| TU 18 | 1.50 | 250 | 1900 |
| TU 20 | 1.70 | 280 | 2100 |

Skip Bins Type FSB

A light weight and cost effective bin suitable for goods transport, storage or waste. Manufactured from 2mm plate with a galvanized finish. Fitted with a forklift carriage this bin is for manual push over. Wheels fitted standard.

Options include:

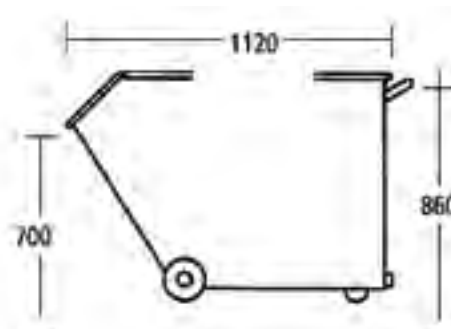
- Crane lugs
- Drain cock and strainer
- Galvanised lids

Specifications:

- Capacity : 350kg SWL
- Pocket size : 160 x 65mm
- Pocket size : FSB6 - 300 mm
FSB9 - 640 mm



| Model | Capacity m3 | Weight kg | Width mm |
|--------|----------------|--------------|-------------|
| FSB6 | 0.35 | 65 | 730 |
| FSB7.5 | 0.50 | 80 | 900 |
| FSB9 | 0.65 | 90 | 1050 |



**Note: This bin is for manual push-over only
Full range of forklift attachments available**



Type ROB Rollover Bins

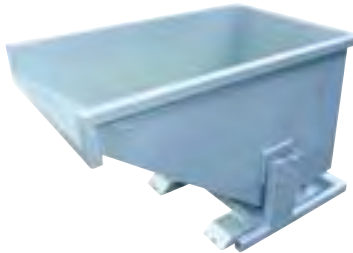
A smooth tipping action with minimal impact during emptying. Side bearings prevent the bin being dislodged during tipping as is common with the roll over style bins. To tip the operator simply pulls the handle via the rope pull, without leaving their seat. The cut away front makes this bin ideal for tipping liquids. Available in either galvanized or painted finish. Structural capacity 1000kg SWL. Pocket size 160 x 65mm.

Options include:

- Crane lugs
- Cast iron and rubber wheels
- Drain cock & strainer
- Galvanised lid



Model ROB9 with optional wheels and crane lugs



Model ROB9



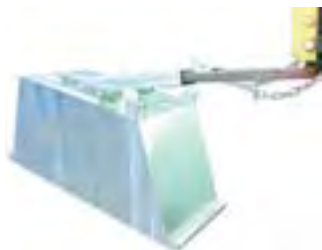
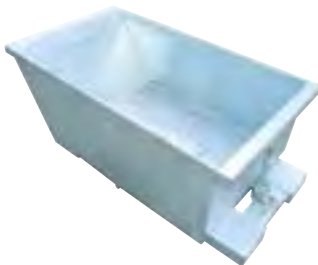
Model ROB15

| Model | Size mm | Weight kg | Volume m ³ |
|-------|---------------------|--------------|--------------------------|
| ROB9 | 1050 x 1500 x 1100H | 210 | 0.90 |
| ROB12 | 1350 x 1500 x 1100H | 225 | 1.15 |
| ROB15 | 1650 x 1500 x 1100H | 255 | 1.40 |
| ROB18 | 1950 x 1500 x 1100H | 280 | 1.70 |

Type SSD Bins

A low profile, compact bin for confined areas. Most suited to collection of slugs from punch machines. Heavy duty construction with self dumping ability, the forklift operator completes the tipping cycle without leaving the driver's seat. Standard with reinforced edges and galvanized finish.

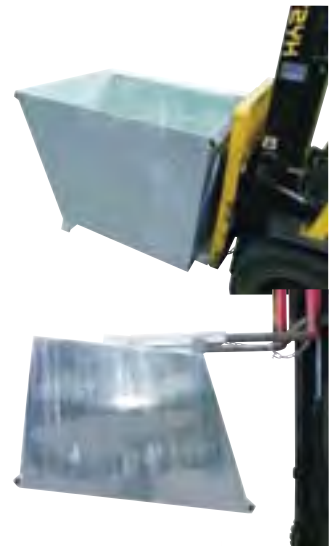
- Capacity 1000kg SWL
- Pocket size 160 x 65mm
- Pocket centres 400mm
- Bin width 710mm
- Overall width 770mm



| Model | Volume m ³ | Weight kg | Length mm | Height mm |
|-------|--------------------------|--------------|--------------|--------------|
| SSD3 | 0.2 | 80 | 1185 | 400 |
| SSD4 | 0.3 | 90 | 1245 | 500 |
| SSD5 | 0.4 | 100 | 1300 | 600 |
| SSD6 | 0.5 | 110 | 1360 | 700 |

Type NSD Bins

The NSD self dumping waste bins provide an economical solution to collecting and disposing of industrial waste. Collection is carried out directly at the point of manufacture. When travelling to the discharge point, the forklift tines are positioned fully under the bin utilizing the forklift's maximum lift capacity. To tip, the operator catches the NSD bin on the edge of the bulk container and drives backwards. When the tines clear the pivot point raise to permit a complete discharge of waste. Reinforced edges standard. Available in either painted or galvanized finish.



| Model | Volume m ³ | Weight kg | Width mm | Length mm | Height mm |
|-------|--------------------------|--------------|-------------|--------------|--------------|
| NSD6 | 0.70 | 185 | 600 | 1425 | 1000 |
| NSD9 | 1.00 | 200 | 900 | 1425 | 1000 |
| NSD12 | 1.35 | 215 | 1200 | 1425 | 1000 |
| NSD15 | 1.70 | 240 | 1500 | 1425 | 1000 |
| NSD18 | 2.00 | 260 | 1800 | 1425 | 1000 |

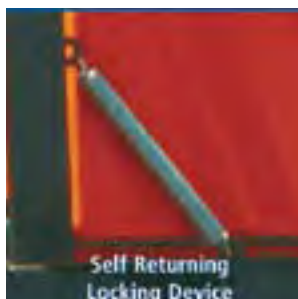
Pelican Tippers



Economy Model

- 2mm steel plate bin construction and 3mm steel fork tyne sections
- Release mechanism activated by the forklift driver pulling the draw rope from the driver's seat
- Poly zinc base powdercoat finish featuring added resistance against corrosion
- S.W.L. 400kg

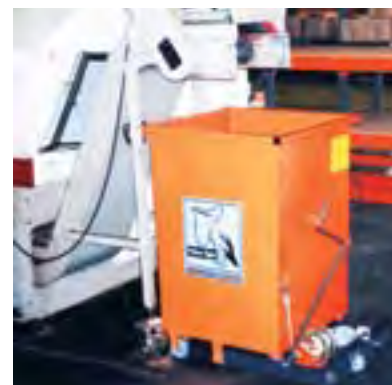
| Model | Length | Width | Depth | Capacity | SWL |
|-----------|--------|-------|-------|--------------------|-------|
| ECP15128 | 1.5m | 1.2m | 0.8 | 1.2m ³ | 400kg |
| ECP15098 | 1.5m | 0.9m | 0.8 | 0.9m ³ | 400kg |
| ECP141255 | 1.4m | 1.2m | 0.55 | 0.77m ³ | 400kg |
| ECP140955 | 1.4m | 0.9m | 0.55 | 0.57m ³ | 400kg |
| ECP100655 | 1.0m | 0.6m | 0.55 | 0.29m ³ | 300kg |



CNP Model

- Compact light-weight winch-operated tipper bin ideal for confined spaces in many industries such as engineering workshops (collecting machine swarf), print shops, food industry, manufacturing, etc
- S.W.L. 250kg

| Model | Length | Width | Depth | Capacity | SWL |
|----------|--------|-------|-------|--------------------|-------|
| CNP669 | 0.6m | 0.6m | 0.9 | 0.32m ³ | 250kg |
| CNP664.5 | 0.6m | 0.6m | 0.47m | 0.16m ³ | 250kg |
| DRP1066 | 1.0m | 0.6m | 0.6m | 0.30m ³ | 250kg |

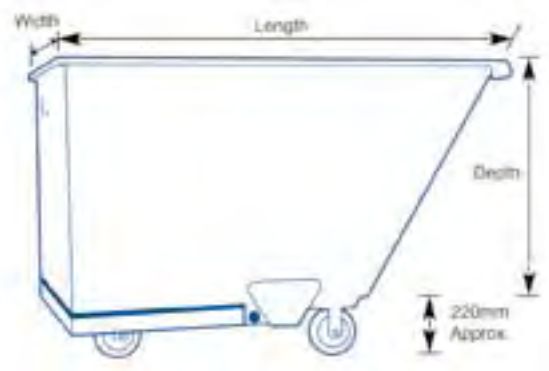
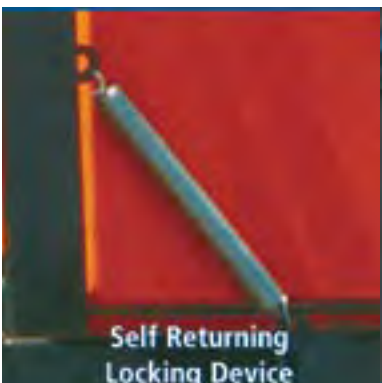
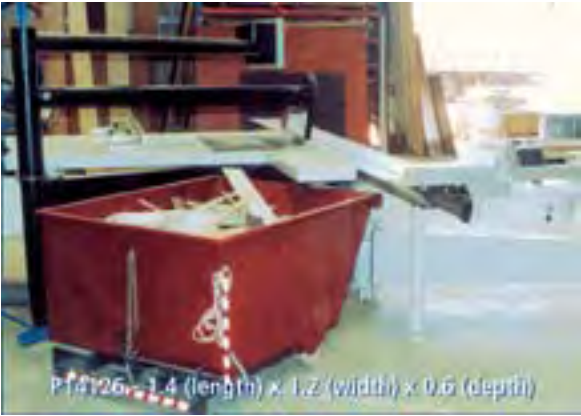


Pelican Tippers

Super Model

- Heavy duty, 3mm steel plate bin construction and 5mm steel fork tyne sections.
- Available with either poly zinc base powdercoat finish or galvanised for maximum corrosion resistance
- Release mechanism activated by the forklift operator pulling the draw rope from the driver's seat
- Rubber shock absorbers (extension and compression) minimises impact forces being transmitted to the forklift during emptying of tipper
- S.W.L. 800kg

| Model | Length | Width | Depth | Capacity | SWL |
|---------|--------|-------|-------|--------------------|-------|
| P15128 | 1.5m | 1.2m | 0.8m | 1.2m ³ | 800kg |
| P15098 | 1.5m | 0.9m | 0.8m | 0.9m ³ | 800kg |
| P141255 | 1.4m | 1.2m | 0.55m | 0.77m ³ | 800kg |
| P140955 | 1.4m | 0.9m | 0.55m | 0.57m ³ | 800kg |
| P100655 | 1.0m | 0.6m | 0.55m | 0.29m ³ | 510kg |



Lifta-Bin

Model MCBIN

- SAVE TIME
- REDUCE INJURY RISK
- IMPROVE PRODUCTIVITY

A simple, safe and effective method of emptying wheelie bins into larger dump bins.

- Simple, Unique, Double Action Safety Lock
- Lifts up to 45kg with minimum operator assistance
- Adjust to fit 120 - 240 Litre wheelie bins
- Easy wheeling 200mm diameter wheels
- Safety clamp locks Lifta-Bin to dump bin

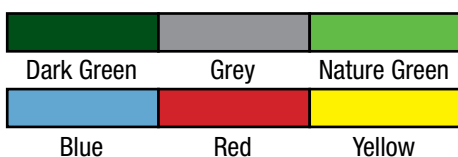


Mobile Waste Bins

| Model | Capacity | Height | Width | Depth |
|--------|----------|--------|-------|-------|
| MGB80 | 80L | 929mm | 445mm | 503mm |
| MGB120 | 120L | 930mm | 500mm | 540mm |
| MGB140 | 140L | 1065mm | 500mm | 540mm |
| MGB240 | 240L | 1075mm | 580mm | 715mm |

Backsafe Australia supplies a comprehensive range of waste handling products. Our mobile garbage bins are available in six colours. They are moulded in specially developed low-pressure polyethylene which is resistant to rot, frost, heat, chemicals and UV light.

Specify colour when ordering



MGB80

MGB240

MGB120



BinLifter Electro Hydraulic – 150kg

Our push button models rated to 150kg capacity. There are 2 versions available in the Electro-Hydraulic model:

12 volt Battery (Deep Cycle)

12v battery driven, fitted with recharger. Simply plug into single phase 240v to recharge battery. Gives approximately 60 lifts per charge.

240 volt mains

240v mains version for demanding applications of many lifts per hour, where mains electricity can be supplied.

SAFETY NOTE: While this unit is rated at 150kg, it is unsafe for one person to move a wheelie bin with 150kg in it.

This model is particularly suited if:

- You are tipping more than 3 bins per day.
- The tipping is done by children (under adult supervision) or less strong adults.
- If you are using 3 cubic metre or larger dump bins, where it is hard to lift the wheelie bins over the side of the dump bins – this is the BinLifter to use.

The two standard models (12v or 240v) give push button simplicity and ease.

Standard it fits 240L and 140L wheelie bins, and with a built in adjustment it can take 120L and 80L wheelie bins. It will tip into dumper bins with a side height from 1000mm to 1800mm.

Order Code: **BLEH12/1500** (suits dump bins up to 1500mm high) } 12 volt model
 Order Code: **BLEH12/1800** (suits dump bins up to 1800mm high) }

Order Code: **BLEH240/1500** (suits dump bins up to 1500mm high) } 24 volt model
 Order Code: **BLEH240/1800** (suits dump bins up to 1800mm high) }



BinLifter Hand Pump Hydraulic – 150kg

An hydraulic hand pump BinLifter model with 150kg capacity

This hand pump version is recommended for use in mines or other flame hazardous areas – or where there is no electric power available.

Simply wheel the bin up to the Liftmaster BinLifter which is attached to the side of the dumper by two sliding catches. Clip the bin onto the frame. Then pump it up to empty. It only takes about 20 double action pumps to tip all the rubbish into the dumper. To lower the bin unscrew the relief valve and the bin will lower in a controlled way over 18 seconds.

In standard mode it fits 240L and 140L wheelie bins, and with a built-in adjustment it can take 120L and 80L wheelie bins. It will tip into dumper bins with a side height from 1000mm to 1800mm.

Wheels (250mm solid rubber) and castors (125mm) means it is easy to move into place. Brakes on castors to immobilise.

Constructed from high strength galvanised and powder coated tubing, so it's non-rusting. Uses Fallshaw quality wheels for easiest rolling.

Order Code: **BLHP/1500** (suits dump bins up to 1500mm high)

Order Code: **BLHP/1800** (suits dump bins up to 1800mm high)



dumpmaster - the safest, most efficient and versatile bin-tipper ever designed!
Tip any bin at any height



Shown: a selection from the dumpmaster range. All machines are available with your choice of tipping height, guarding type, bin cradle, and power source.

| OPTIONS ILLUSTRATED IN PHOTO: | | OPTIONS ILLUSTRATED IN PHOTO: | | OPTIONS ILLUSTRATED IN PHOTO: | |
|---|-----------------------------|-------------------------------|-----------------------|-------------------------------|-----------------------|
| Height: | 700mm tipping height | Height: | 1200mm tipping height | Height: | 1500mm tipping height |
| Guarding: | full-cage PET-G | Guarding: | side-guarding | Guarding: | side-guarding |
| Bin Cradle: | 80/120/240 litre bin cradle | Bin Cradle: | 240 litre bin cradle | Bin Cradle: | 200 litre drum cradle |
| (Designed for emptying off truck docks) | | | | | |

Eliminates Back Strain

DUMPMASTERS empty bins from floor level effortlessly with the simple push of a button – the safe alternative with no bending or lifting required by the operator.

Safe to use

- Bins are raised vertically, then gently rolled forward when they are at the right height.
- This design uses a minimum of space, and is much safer than tipper that rotate the bin around a fixed pivot point.
- The bin and cradle come down by gravity alone, which increases the DUMPMASTERS safety.

Up to 300kg bin weight*

Standard DUMPMASTERS can empty bins up to 250kg. In some circumstances the machines can be modified to take bins up to 300kg. A hydraulic pressure-relief valve prevents overloading.

*NOTE: The heavy-duty MEGADUMPER range from Backsafe Australia can empty bins up to 750kg.

Empty bins at any height

Choose from four standard tipping heights (700mm, 1200mm, 1500mm and 1800mm), or specify your ideal height (up to 6 metres).

Empty almost any kind of bin

Cradles are available to hold: 80, 120, 140, 240, 660 and 1100 litre 'wheelie bins', 200 litre drums, and a wide range of buckets, trays and crates.

Cradles are available that will hold two or more different sizes of bin. There's no need to clamp standard bins.

Dumpmaster Range

| Tipping Height | Models available | | Power Source | | |
|----------------|------------------|--------------|--------------|--------------|--|
| | Battery Operated | Single Phase | Three Phase | Air Operated | |
| | Order Codes | Order Codes | Order Codes | Order Codes | |
| 700mm | DM700B | DM700S | DM700P | DM700A | |
| 1200mm | DM1200B | DM1200S | DM1200P | DM1200A | |
| 1500mm | DM1500B | DM1500S | DM1500P | DM1500A | |
| 1800mm | DM1800B | DM1800S | DM1800P | DM1800A | |

| Standard Specifications | |
|-------------------------------------|--------------------------------|
| Frame width | 920mm |
| Overall width | 950mm |
| Length (fullcage-guarding) | 1150mm |
| Height: (ie. the machine is 2865mm) | Nominal tipping height +1065mm |
| Capacity | 260kg |





Model: DM1800B



OPTIONS ILLUSTRATED IN PHOTO:

Height: 2700mm tipping height

Guarding: full-cage PET-G

Bin Cradle: 120/240 litre bin cradle

OPTIONS ILLUSTRATED IN PHOTO:

Height: 1800mm tipping height

Guarding: full-cage mesh

Bin Cradle: 120/240 litre bin cradle

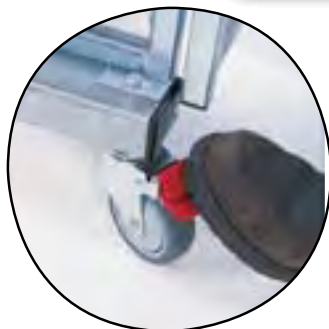
OPTIONS ILLUSTRATED IN PHOTO:

Height: 1500mm tipping height

Guarding: full-cage mesh

Bin Cradle: 120/240/660 litre bin cradle

**Hire Option
AVAILABLE**



Operation couldn't be easier

Simply wheel the bin onto the cradle and press the 'up' button. When the bin has emptied, press the 'down' button.

- There's no need to strap or clamp the bin
- Stop the machine at any time by taking your finger off the button
- A choice of Emergency Stop or Key Switch is also offered

Easy to move

DUMPMASTERS have four castors for total manoeuvrability. Standard wheels are rubber-tyred, 100mm diameter, with ball bearings for ease of moving. The front two castors have brakes that lock both the wheel and swivel mechanism.

Choose your power source

Choose either battery, air, single-phase, or 3-phase power source. Battery powered models have a built-in automatic charger and can empty up to 12 tonnes of product on a single charge (depending on tip height, and battery condition). Standard DUMPMASTERS may be used outdoors. Machines can be simply upgraded to suit more severe environmental conditions.

Galvanised or stainless steel frame options

DUMPMASTERS usually have a fully hot-dip galvanised steel frame with zinc-plated guarding. They can also be supplied partially or entirely from stainless steel for food and pharmaceutical applications.

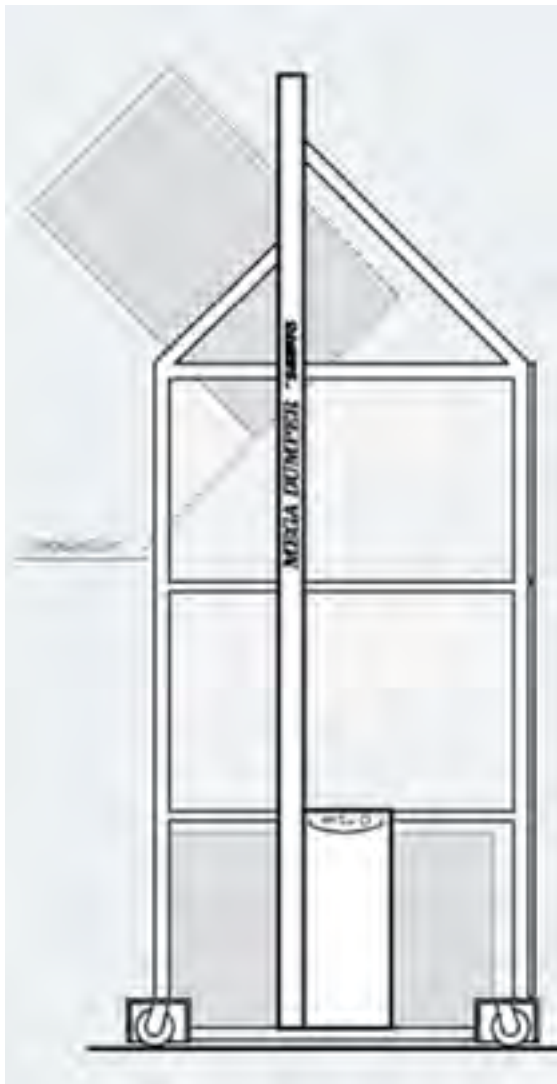
Mega Dumper

Custom-built for your bin-tipping requirements. Ideal for bakeries, fruit processors, meat processors, grape growers or wineries.

- Up to 750kg bin weight
- Galvanised or stainless steel frame
- Unique tipping action
- 4.5mm thick safety guarding (to 2500mm high)
- Electric interlocked door
- 3 phase hydraulic power pack
- Simple operation with up/down control and emergency stop
- Mobile option (adds approximately 400mm to unit width).

Specifications

| | |
|-----------------|--|
| Overall Width | Normally approx. 'bin width' + 400mm (excluding castors) |
| Overall Length | Normally approx. 'bin length' + 300mm |
| Overall Height | Normally approx. 'tipping height' + 1800mm |
| Weight Capacity | 3 models are available with 450kg, 600kg and 750kg capacity. (For bins up to 300kg see the range of Dumpmasters) |
| Tipping Height | Available at any height up to 6000mm |



Illustrated: Empty Bins up to 750kg with the push of a button



