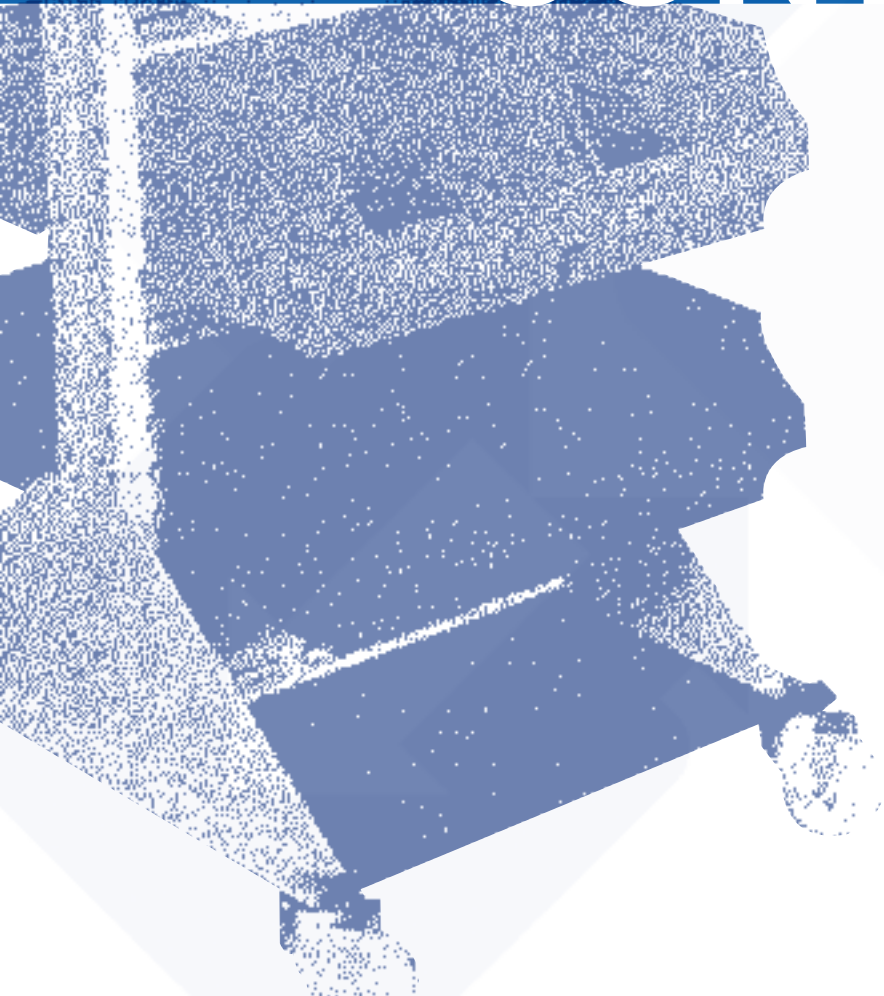


- Materials handling crates
- Bins and buckets
- Bulk handling
- Bins and tanks

CONTAINERS



Containers

These crates are used extensively in food processing, meat trades, small goods manufacture, the fishing industry, poultry processing, materials handling, warehousing and distribution.

Features:

- Made from tough, durable UV resistant polyethylene
- Lightweight yet strong enough to stand the rough and tumble of a long working life
- Nest when empty to save valuable storage space
- Full cover lid system available
- Hot stamping available to clearly identify ownership



Available in colours red, white, blue or grey

MH0100 No.7 Crate	MH0110 No.10 Crate	MH0120 No.15 Crate	MH0130 Pilfer Proof Lid
Nominal Statistics Outside: 645 x 413 x 210mm Inside: 597 x 362 x 203mm Capacity: 32 litres	Nominal Statistics Outside: 645 x 413 x 276mm Inside: 597 x 362 x 266mm Capacity: 52 litres	Nominal Statistics Outside: 645 x 413 x 397mm Inside: 597 x 362 x 381mm Capacity: 68.2 litres	To suit No 7/10/15 Crates Nominal Statistics Size: 656 x 425 x 32mm

Recycled Series Not for food use

MH0100 R	MH0110 R	MH0120 R	MH0130 R
Nominal Statistics as above Available in black only	Nominal Statistics as above Available in black only	Nominal Statistics as above Available in black only	Nominal Statistics as above Available in black only



Trolley to suit No. 7, 10 and 15 crates. Galvanised finish with 4 x 75Ø nylon castors



Multi Stacker Crates

The widely used multi-stacker range offers a cost effective solution for handling and storing a wide range of materials. Lightweight, yet tough enough to give long service life in demanding manufacturing, engineering and food applications.

Model	Description	Dimensions	Capacity
MH0020	Small	Ext. 432mm x 324mm x 127mmH Int. 387mm x 286mm x 120mm	13 litres
MH0030	Medium	Ext. 432mm x 324mm x 203mmH Int. 387mm x 286mm x 197mm	21 litres
MH0040	Large	Ext. 432mm x 324mm x 305mmH Int. 387mm x 286mm x 298mm	33 litres

MH0050 Lid 400mm x 330mm x 20mm

Available in white and blue—Lid white only



Industrial and Automotive Crates

These extra heavy duty crates are used for handling components in a wide range of heavy manufacturing and assembly line situations.

MH2070 25 litre P Container

Nominal Statistics

Outside: 580 x 385 x 166mm

Inside: 518 x 335 x 140mm

Capacity: 25 litres

Colour: Grey

Base: Ventilated

ST024: With solid base



MH2074

MH2074 50 litre Transport

Nominal Statistics

Outside: 580 x 385 x 320mm

Inside: 518 x 335 x 295mm

Capacity: 50 litres

Colour: Grey

Base: Ventilated



MH2070

MH2060 Heavy Duty Crate

Nominal Statistics

Outside: 400 x 280 x 245mm

Inside: 360 x 245 x 240mm

Capacity: 20 litres

Colour: Grey

Base: Drainage holes

MH2060





MH0250 No 4 Crate

Nominal Statistics
 Outside: 430 x 323 x 127mm
 Inside: 394 x 285 x 108mm
 Capacity: 13.5 litres
 Colours: White, orange, yellow, blue



MH2065 Large Tote Box

Nominal Statistics (crate)
 Outside: 520 x 350 x 280mm
 Inside: 475 x 325 x 275mm
 Capacity: 42 litres
 Colour: White
 Lid available MH2066



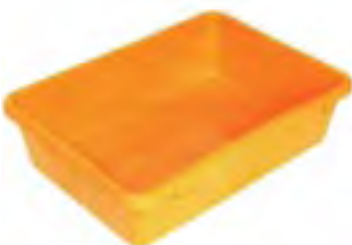
MH0252 Lid for No 4 Crate

Nominal Statistics
 Dimensions: 440 x 332 x 20mm
 Colour: White



MH2185 No 12 Crate

Nominal Statistics
 Outside: 711 x 438 x 382mm
 Inside: 673 x 400 x 276mm
 Capacity: 54.5 litres
 Colour: White, red



MH2170 No 5 Crate

Nominal Statistics
 Outside: 527 x 381 x 140mm
 Inside: 489 x 343 x 127mm
 Capacity: 22.7 litres
 Colour: White, orange



MH2220 Liver Tray

Nominal Statistics
 Outside: 514 x 213 x 130mm
 Inside: 483 x 178 x 127mm
 Capacity: 11 litres
 Colour: White



MH2172 Lid for No 5 Crate

Nominal Statistics
 Dimensions: 546 x 392 x 20mm
 Colour: White



MH2120 Model 25 Crate

Nominal Statistics
 Outside: 584 x 267 x 178mm
 Inside: 533 x 229 x 165mm
 Capacity: 20 litres
 Colour: White, red



MH2100 Ext'd Model 30 Crate

Nominal Statistics
 Outside: 460 x 320 x 260mm
 Inside: 415 x 270 x 255mm
 Capacity: 27 litres
 Colour: White, red, blue



MH0260 Slab Sided Crate

Nominal Statistics
 Outside: 356 x 356 x 292mm
 Inside: 331 x 331 x 279mm
 Capacity: 29 litres
 Colour: Blue, green



MH2210 No 8 Crate

Nominal Statistics
 Outside: 565 x 387 x 203mm
 Inside: 556 x 355 x 190mm
 Capacity: 36 litres
 Colour: White, grey
 Available mesh base MH2215

MH2130 Model 10 Crate

Nominal Statistics
 Outside: 629 x 400 x 216mm
 Inside: 597 x 368 x 210mm
 Capacity: 46 litres
 Colour: White

MH2076 50 Litre Side Access

Nominal Statistics
 Outside: 580 x 385 x 320mm
 Inside: 518 x 335 x 295mm
 Capacity: 50 litres
 Colour: Grey

MH2030 Confectionery Tray

Nominal Statistics
 Outside: 712 x 448 x 95mm
 Inside: 680 x 416 x 76mm
 Capacity: 29 litres
 Colour: White
 Standard mesh base

MH2037 Small Tray

Nominal Statistics
 Outside: 456 x 318 x 57mm
 Inside: 422 x 292 x 55mm
 Colour: White

MH2035 Commercial Tray

Nominal Statistics
 Outside: 455 x 343 x 32mm
 Inside: 420 x 305 x 25mm
 Colour: White

MH2250 50 Litre Crate

Nominal Statistics
 Outside: 572 x 382 x 318mm
 Inside: 520 x 350 x 295mm
 Capacity: 50 litres
 Colour: Yellow

MH2090 44 Litre Crate

Nominal Statistics
 Outside: 538 x 362 x 334mm
 Inside: 460 x 324 x 253mm
 Capacity: 44 litres
 Colour: Orange

MH0200 Stacking Lug Box

Nominal Statistics
 Outside: 610 x 419 x 312mm
 Inside: 571 x 381 x 305mm
 Capacity: 66 litres
 Colour: Blue, orange

MH2200 118 Litre Crate

Nominal Statistics
 Outside: 950 x 460 x 435mm
 Inside: 770 x 365 x 365mm
 Capacity: 118 litres
 Colour: White

MH2400V 200 Litre Tub

Nominal Statistics
 Top: 900 x 550mm
 Bottom: 750 x 420mm
 Depth: 470mm
 Capacity: 200 litres
 Colour: White, grey, black



Buckets and Bins

The Backsafe Australia range of storage bins and tubs are used extensively throughout the meat, smallgoods and food processing industries and in the manufacture of pharmaceuticals, chemicals and textiles. Moulded from either polypropylene or high density polyethylene they are ideal for both storage and movement of product.

MH2790 67.69 litre container

A	
Inside Ø:	485mm
Height:	508mm
Capacity:	67.69 litres
MH2800	Lid to suit
Colour:	White, red

MH2805 113.6 litre container

B	
Inside Ø:	590mm
Height:	444mm
Depth:	340mm
Capacity:	113.6 litres
MH2810	Lid to suit
Colour:	White, red

MH2795 84 litre container

C	
Inside Ø:	485mm
Height:	605mm
Capacity:	84 litres
MH2800	Lid to suit
Colour:	White, green, red



MH2765 22.7 litre Bucket

D	
Inside Ø:	Top 320mm
Base:	282mm
Height:	342mm
Capacity:	22.7 litres
MH2770	Lid to suit
Colour:	Blue, red, white

MH2670 18.2 litre Bucket

E	
Inside Ø:	Top 320mm
Base:	290mm
Height:	280mm
Capacity:	18.2 litres
Colour:	White only
MH2770	Lid to suit

MH2750 13.6 litre Bucket

F	
Inside Ø:	Top 273mm
Base:	222mm
Height:	286mm
Capacity:	13.6 litres
Colour:	White, red, blue
MH2755	Lid to suit



Round Brute® Containers

Multi-purpose storage and handling containers

- Food grade plastic, professional-grade construction
- Strong, snap-on lids available for secure, stable stacking
- Reinforced rims for added strength and durability
- Built-in handles for easy, non-slip lifting; easy anti-jam nesting
- Rugged Twist On/Off Dolly available for mobile applications. Fits all Brute bins except 2610



Round Brute® Containers

Order Code	Capacity Litres	Dimensions	Colour
2610	37	396mm Ø x 435mm H	Grey, White
2620	76	495mm Ø x 582mm H	Grey, White, Yellow, Red
2632	121	558mm Ø x 692mm H	Grey, White, Yellow, Red
2643	166	610mm Ø x 800mm H	Grey, White, Yellow, Red
2655	208	673mm Ø x 838mm H	Grey

Round Brute® Lids

2609	Lid	Fits 2610	Grey, White
2619	Lid	Fits 2620	Grey, White, Yellow, Red
2631	Lid	Fits 2632	Grey, White, Yellow, Red
2645	Lid	Fits 2643	Grey, White, Yellow, Red
2654	Lid	Fits 2655	Grey

Round Brute® Accessories

2640	Brute Dolly Fits 2620 – 2655 containers	Black
2650	Universal Drum Dolly	Black



Plastic Supra Bins

Special Features:

- Made from Polypropylene Copolymer
- Strong rear lip for use with louvred panels
- Strong heavy duty with reinforced base, sides & stacking rim
- Resistant to most industrial solvents, withstands high temperature
- A choice of internal divider systems, enables effective storage of a wide range of components from small to medium size.
- Clear access to contents
- All bins with ID card holders
- Safety stop feature in SB4, SB5, SB6 for use in shelves



Colours Available:

SB1-6: red, green, blue, grey, orange

SB7: red & blue only

ID-Cards Available:

#1 suits SB1, SB2, **#2** suits SB3, SB4, SB5, SB6, SB7

Order Code	Dimensions		
	Width(mm)	Height (mm)	Depth (mm) (Front to Back)
SB1	96	60	115
SB2	96	85	165
SB3	130	125	225
SB4	180	145	285
SB5	365	145	285
SB6	180	145	435
SB7	395	215	435



Plastic bins supplied separately.

Steel Louvre Panels

Holes on both sides secure panel to wall



Order Code	Width (mm)	Height (mm)
SB-LP1	457	457
SB-LP2	457	600
SB-LP3	457	900

	Number of Bins per Louvre Panel						
	SB1	SB2	SB3	SB4	SB5	SB6	SB7
SB-LP1	24	16	9	6	3	6	2
SB-LP2	32	20	12	8	4	8	3
SB-LP3	48	32	18	12	5	12	4

Plastic Dividers

Useful plastic accessories divide bins, either left to right or front to back



Order Code	Dividers
HP-SB3-ID	Across divider for SB3 bins with ID card
HP-SB4/6-ID	Across divider for SB4 & SB6 bins with ID card
HP-SB4/6	Across divider for SB4 & SB6 bins (no ID)
HP-SB4/5	Front-back divider for SB4 & SB5 bins (no ID)
HP-SB7	Front-back divider for SB7 bins (no ID)



Free Standing Metal Louvre Panels

Free Standing double sided panels in two heights

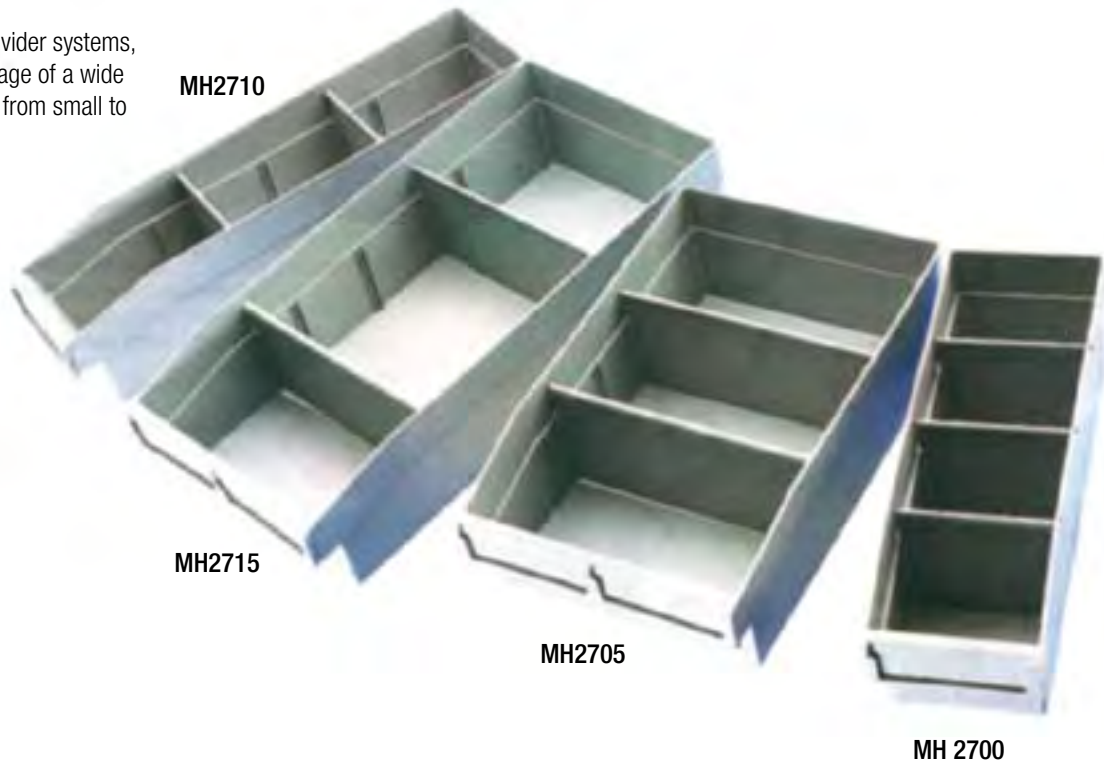
Model SP 1370	440mm x 1370mm
Model SP 1830	440mm x 1830mm

Utility Bins

The utility bin range offers a cost effective, space saving solution for the storage and handling of a wide range of component parts. They are light in weight, yet strong enough to give a long service life in tough manufacturing, assembly line and engineering applications. Internal divider options give maximum storage flexibility and strong, integral handgrips make for easy handling.

Special Features:

- Strong and durable, yet light in weight
- Robust design with integral handgrips
- Easy-to-change labelling facility
- Can stack or nest
- A choice of internal divider systems, enables effective storage of a wide range of components from small to medium size.



Model MH2700

Nominal Statistics

Outside: 324 x 105 x 100mm

Inside: 290 x 92 x 98mm

Weight: 431gms

Capacity: 2.6 litres

Divider provision: Maximum 5

Supplied with 3 Dividers

Model MH2705

Nominal Statistics

Outside: 324 x 203 x 100mm

Inside: 290 x 190 x 98mm

Weight: 622gms

Capacity: 5.4 litres

Divider provision: Maximum 5

Supplied with 2 Dividers

Model MH2710

Nominal Statistics

Outside: 424 x 105 x 100mm

Inside: 390 x 92 x 98mm

Weight: 503gms

Capacity: 3.5 litres

Divider provision: Maximum 5

Supplied with 2 Dividers

Model MH2715

Nominal Statistics

Outside: 424 x 203 x 100mm

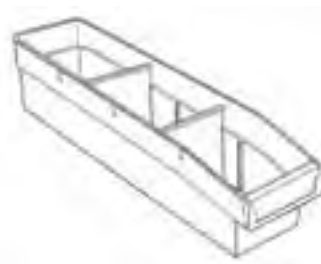
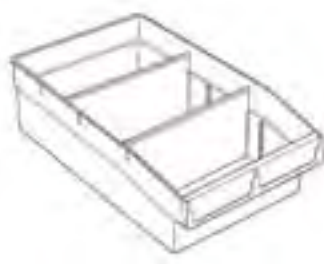
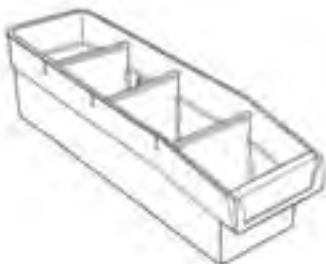
Inside: 390 x 190 x 98mm

Weight: 725gms

Capacity: 7.3 litres

Divider provision: Maximum 5

Supplied with 2 Dividers



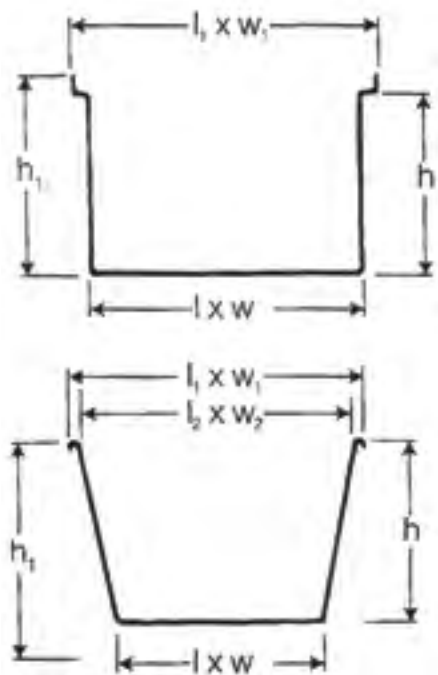
Heavy Duty Rectangular Bins

Heavy duty rotationally moulded tanks for use in: food, textile, pharmaceutical, laundries, hospitals and most industrial and manufacturing applications.

- Food grade polyethylene
- Rotational moulded
- Resistant to most chemicals
- Optional lids



Rectangular Tanks 60 – 1,250 litre



Model	Capacity	Rim Dimensions (LxW)	Rim Height	Base Dimensions
RM3500	60 litres	595mm x 400mm	370mm	560mm x 360mm
RM3520*	110 litres	650mm x 555mm	440mm	540mm x 435mm
RM3540*	125 litres	685mm x 430mm	670mm	560mm x 315mm
RM3542	Lid to suit RM3540			
RM3560	160 litres	660mm x 660mm	475mm	620mm x 620mm
RM3602	Lid to suit RM3560			
RM3570	170 litres	1150mm x 635mm	370mm	1015mm x 515mm
RM3580	250 litres	1150mm x 635mm	530mm	1015mm x 515mm
RM3582	Lid to suit RM3580 and RM3570			
RM3590*	300 litres	1000mm x 700mm	610mm	855mm x 550mm
RM3600*	340 litres	660mm x 660mm	930mm	560mm x 560mm
RM3602	Lid to suit RM3600			
RM3610	450 litres	1350mm x 730mm	635mm	1220mm x 605mm
RM3612	Lid to suit RM3610			
RM3640	1000 litres	1955mm x 890mm	770mm	1830mm x 760mm
RM3642	Lid to suit RM3640			
RM3650	1250 litres	1715mm x 1105mm	920mm	1525mm x 915mm

* Tapered Containers



Super Trucks

RM3060

RM3040



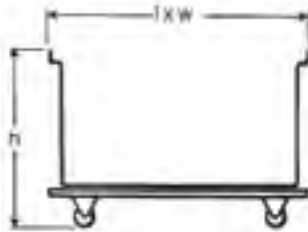
RM3020

RM3030

Based on the rectangular tank range, supertrucks combine different chassis and castors to create a very versatile product range. Capacity ranges from 170 to 1000 litres.

Rising Base

This ergonomic lifting device has been developed for laundry and various materials handling applications. It is designed to present its contents at a constant waist height to prevent back and associated injuries caused by lifting. The cut away section of the bin displays the scissor lift and spring mechanism. The zinc plated base offers a range of spring tension loads – 15, 20, 35, 50, 75, 100 and 150kgs – and is available in 250, 450 and 1000 litre SuperTrucks



Options include lids, moulding colour, corporate identification and drain facilities.



Type 'A' Trolley

General purpose truck for solid loads
Maximum load rating 450kgs

Only available with RM3040/RM3060



Industrial Box Trucks

Model	Chassis Type	Capacity	Rim Dimensions	Height
RM3060	A	225 litres	635mmØ	990mm
RM3020	B	170 litres	1150mm x 635mm	530mm
RM3030	B	250 litres	1150mm x 635mm	670mm
RM3040*	A	300 litres	1000mm x 700mm	780mm
RM3050	B	450 litres	1350mm x 730mm	790mm
RM3060*	B	450 litres	1385mm x 750mm	795mm
RM3070	C	1000 litres	1955mm x 890mm	1090mm

*Trolley has diamond shaped base frame complete with four (4) swivel castors.

Type 'B' Trolley

General purpose truck for solid loads
Maximum load rating 450kgs

Wheels are 4 x 100mm nylon castors



Type 'C' Trolley

For very heavy and liquid loads
Maximum load rating 750kgs

RM3070 model features 4 x 150mm castors



Big Bin & Trolley Heavy Duty rotomould tub on trolley.

- Big 400 litre capacity
- Powdercoated trolley to suit
- 1130mm x 600mm x 600mmH
- Spring loaded scissor base
- Capacity 100kg

Model	Description
SR-T	400 Litre tub
SR-D	Trolley to suit
SR-SLB	Spring loaded base





When ordering specify
Model MEG-S (solid bin)
Model MEG-V (vented bin)
Model MEG-Lid (lid to suit)

Mega Bin™

- Designed specifically for the Australian market, the Mega Bin is capable of holding up to half a tonne and has the same footprint dimensions as an Australian pallet.
- Available in solid or vented.
- The positive interlocking foot design offers quicker handling and safe stacking up to ten high.
- Available in colour beige only.

Specifications

External Size:	1162mm x 1162mm
Height:	780 mm
Volume:	715 litres
Weight:	43 kg
Bin Capacity:	up to 500kg

Heavy Duty Hygiene Pallet

Moulded in high density polyethylene the hygiene pallet has been specially made for the food and pharmaceutical industries. It can be chemically sterilised, steam cleaned or hot washed without any effect to its corrosion proof body.

Specifications Model MH6010

Standard Size:	1165mm x 1165mm	
Construction:	Extrusion flow moulding	
Material:	High Density Polyethylene	
Weight:	34kg (Nominal)	
SWL:	Beam racking	2 tonne
	Drive-in racking	1 tonne
Colour:	Black as standard	

MH6010



Mini Pallet

SAVES LIFTING, SAVES BACKS, SAVES TIME
 Mini Pallets promote the quick and safe movement and storage of small cartons, drums, pot plants and equipment.

- Ease of handling
- Easy storage
- Clean and tidy
- Quick and easy moving of oversized cartons
- Cartons susceptible to water damage are off the floor
- Promotes best practice
- Manufactured of polypropylene



Model	Dimensions (LxWxH)	Internal
Large	400 x 260 x 40mm	380mm
Medium	376 x 260 x 40mm	355mm

Collapsible Bulk Boxes

Reusable bulk containers for a wide range of material handling and shipping applications. For bulk raw materials, parts assemblies, finished goods, food processing, shipping. When ordering specify Model CBB-12.

- Impact resistant polyethylene for long container life.
- Drop doors allow easy access when stacked.
- Available with optional lid (model CBB-L).
- Size: 1200mmL x 1000mmW x 1000mmH.

Model CBB-12



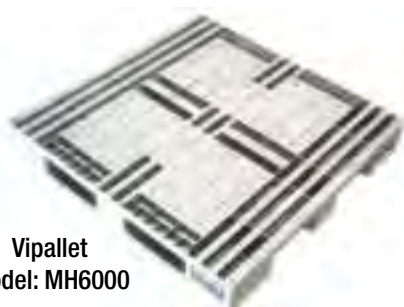
New Product

VIPALLET

The cost effective alternative pallet for:

Food processing, pharmaceuticals, groceries, printing, textiles, chemicals, beverages, tanning and general industrial applications.

- Measuring 1168 x 1168mm (Standard Australian size) they have a nominal weight of 16.8kg.



Vipallet
 Model: MH6000